

REXONEYE

REXONEYE

# THE EYE WELLNESS SOLUTION





**THE EYE  
WELLNESS  
SOLUTION**



# REXON-EYE THERAPY

Rexon-Eye® is a non-invasive device based on **patented QMR® Technology** that treats the cause of dry eye disease, delivering long-term results **for all forms of dry eye and all types of skin.**

It works by applying a low power high frequency electrical current, which has **an important anti-inflammatory<sup>1</sup>** action and is capable of stimulating the metabolism<sup>2</sup> and **natural regeneration of cells.<sup>3</sup>**

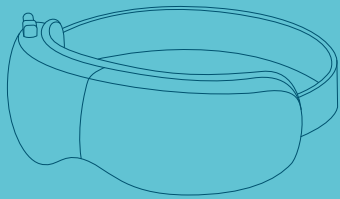
The treatment addresses all types of dry eye (evaporative, aqueous deficient and mixed dry eye), as evidenced by subjective and objective measurements reported in published clinical studies.<sup>4 5 6 7 8 9 10</sup>

# HOW DOES IT WORK?

The treatment is delivered by contact electrodes built into a mask, which is worn by the patient over closed eyes. The device setup is very easy and intuitive.

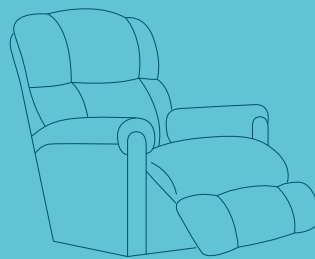
The operator simply needs to select the power and the duration of the treatment by turning a rotary knob and then pressing it to confirm.

# THERAPY PROTOCOL



**4**

**TREATMENT  
SESSIONS**



**20**

**MINUTES  
EACH**



**1**

**WEEK  
INTERVAL**

REXONEYE



# UNIQUENESS OF THE THERAPY

All types of Dry Eye disease: ●  
evaporative, aqueous deficient  
and mixed

Regenerative effect thanks to the ●  
QMR<sup>®</sup> Technology<sup>3</sup>

Pleasant and relaxing ●  
treatment for all types of skin

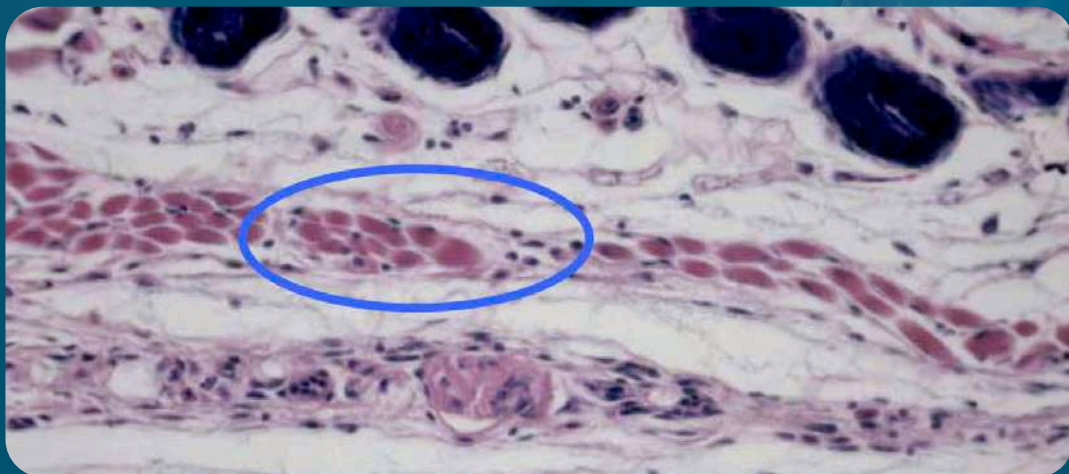
Anti-inflammatory effect<sup>1</sup> ●

Hands free sessions ●



# QMR<sup>®</sup> TECHNOLOGY

The principle of operation of Rexion-Eye<sup>®</sup> is the Quantum Molecular Resonance (QMR<sup>®</sup>) Technology, which delivers a mild alternate electrical signal containing a specific mix of frequencies (from 4 MHz to 64 MHz) that has been shown to **stimulate the natural regeneration of cells**<sup>3</sup>, in addition to having an important **anti-inflammatory action**.<sup>1</sup>



Effects of high frequency and low intensity currents: biostimulation and cell regeneration. Prof. C. Reggiani, Scientific Director of Research, University of Padova<sup>11</sup>

Studies showed that after a course of QMR<sup>®</sup> stimulation, the parvocellular infiltrate (black dots) appeared within the muscle fibers. This is a result of the regenerative process in progress.

## THE ANTI-INFLAMMATORY EFFECT

Inflammation plays a key role in what is called the "**vicious circle of dry eye.**" Inflammation leads to tear film instability and ocular surface damage. As the eyes become drier, the level of inflammation increases. This heightened inflammation further exacerbates the dryness of the eyes.

Rexon-Eye® Therapy interrupts this cycle through its anti-inflammatory effect. The technology acts to modulate macrophage polarization from the pro-inflammatory M1 phenotype towards the anti-inflammatory M2 phenotype. Macrophages M2 **reduce inflammation** by downregulating inflammatory cytokines and **releasing anti-inflammatory cytokines.** <sup>1</sup>

## NATURAL REGENERATIVE EFFECT

QMR® Technology emits packets of energy quanta capable of altering ion concentrations in the intracellular/extracellular matrix (biochemical effect), leading to significant changes in the transmembrane potential of the target cells.<sup>2</sup> These changes trigger metabolic pathways that **stimulate MSCs (Mesenchymal Stromal Cells)**. Subsequently, MSCs differentiate into the required cell types.

Due to the properties of stem cells, **the regenerated biological tissue** possesses the same characteristics and functionality as the original tissue.

## BIOLOGICAL SAFETY

QMR® Technology is proven to be biologically safe. Rigorous studies on chromosomes, apoptosis, and proteins have affirmed its biological safety, assuring the **absence of cellular damage in patients** <sup>3</sup> .

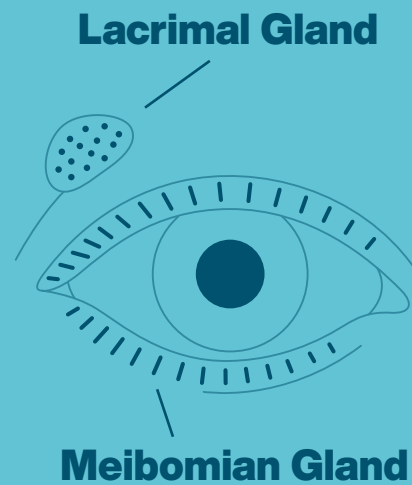
# TECHNOLOGY COMPARISON FOR OCULAR SURFACE TREATMENT

CLINICAL USES	IPL	WARM COMPRESSES	PHOTOBIO-MODULATION	QMR®
Treatment of Meibomian Gland Dysfunction in Dry Eye	●	●	●	●
Treatment of Hyposecretive Dry Eye				●
Treatment of Mixed Dry Eye				●
Pre- and Post-Surgical Use (cataract, refractive, etc.)	●		●	●
Autoimmune-related Dry Eye (e.g., Sjögren's Syndrome, Rheumatoid Arthritis)			●	●
Stimulates Natural Cell Regeneration				●
Promotion of Anti-Inflammation	●		●	●
Treatment of the Underlying Cause of DED				●
Long-Lasting Symptom Remission				●
<b>PATIENT EXPERIENCE &amp; SAFETY</b>				
Pleasant and Relaxing, Pain-Free Treatment		●	●	●
No Photosensitivity Risk		●		●
Suitable for all skin types and phototypes		●	●	●
Proven Biological Safety				●
<b>TECHNOLOGY &amp; OPERATIONAL EFFICIENCY</b>				
Patented Technology				●
No Need for Gel or Additional Consumables		●	●	●
Hands-Free Sessions (No operator Needed During Treatment)		●	●	●
Minimal Need for Maintenance or Calibration		●		●
Easy transportability		●		●

## THE FIRST THERAPY FOR HYPOSECRETIVE AND MIXED DRY EYE

Rexon-Eye® promotes the natural regeneration of the tear film by targeting **all three of its layers**. It stimulates the **Meibomian glands**, improving both the production and quality of the Meibum. It also acts on the **Lacrimal gland**, enhancing the production of the aqueous layer.

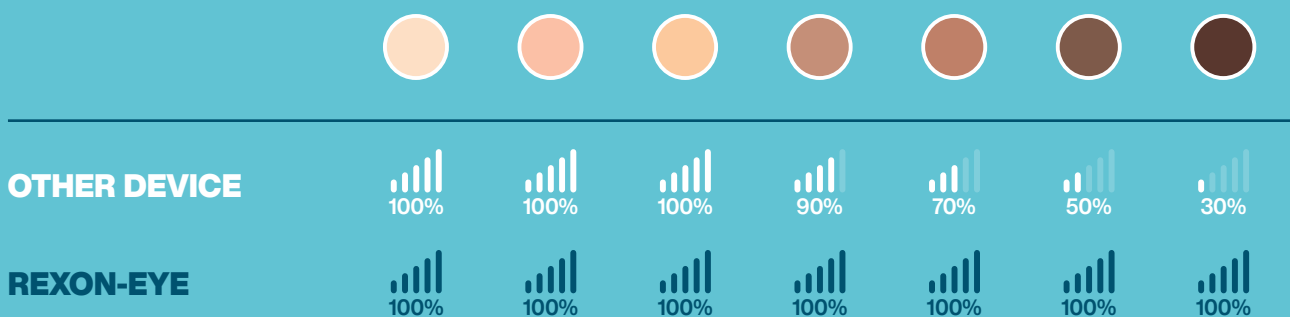
This multi-targeted approach makes Rexon-Eye® a unique and comprehensive solution, not only for evaporative but also for hyposecretive and mixed dry eye conditions.



## SUITABLE FOR ALL SKIN TYPES AND PHOTOTYPES

QMR® is an electrical signal, not a light-based one. This means its effectiveness does not depend on skin color or phototype, but rather on the tissue's impedance. As a result, the treatment is **safe and effective for all skin types**, making it universally applicable without the limitations commonly associated with light or laser-based technologies.

EFFECTIVE POWER ON DIFFERENT SKIN TONES





# THE EYE WELLNESS SOLUTION

THE EYE  
WELLNESS  
SOLUTION  
REXONEYE  
CENTER

# PATIENT EXPERIENCE

## THE EYE WELLNESS APPROACH

Dry eye patients often endure not only physical discomfort but also emotional stress caused by persistent symptoms. That's why we created the Eye Wellness solution — to offer a treatment experience that cares for both eyes and mind.

The Rexion-Eye® **Wellness Area** transforms treatment into a moment of relaxation, combining therapy with a calming environment. This concept enhances the perceived value of the treatment, improving patient satisfaction and loyalty.

## PLEASANT. RELAXING. PAIN-FREE.

Rexion-Eye® is a non-invasive, pain-free therapy that delivers clinical results in a calm, stress-free setting. Each session is quiet, comfortable, and often enhanced with music — creating a moment of true relaxation for the patient.

## HANDS FREE SESSIONS

The Rexion-Eye® therapy must be set up by the medical personnel, but they do not need to be present with the patient during the entire session. The Rexion-Eye® device is provided with a Patient Calm Control, which is given to the patient to stop the therapy if necessary.

# REXON-EYE COMPONENTS



## Rexon-Eye® Mask

Rexon-Eye® Active Mask electrode with cable. The accessory worn by the patient to deliver the therapy. The string behind can be regulated

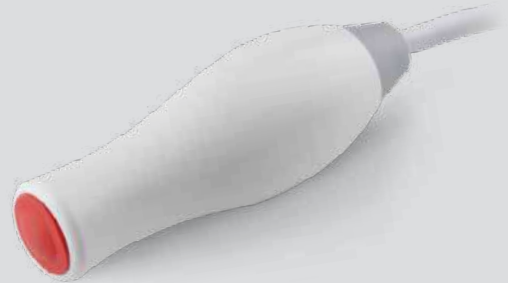
Code: **4002030R**

---

## Patient Calm Control

Allows patients to effortlessly pause their therapy if needed, ensuring a comfortable and stress-free experience.

Code: **4002018R**



## Neutral plate

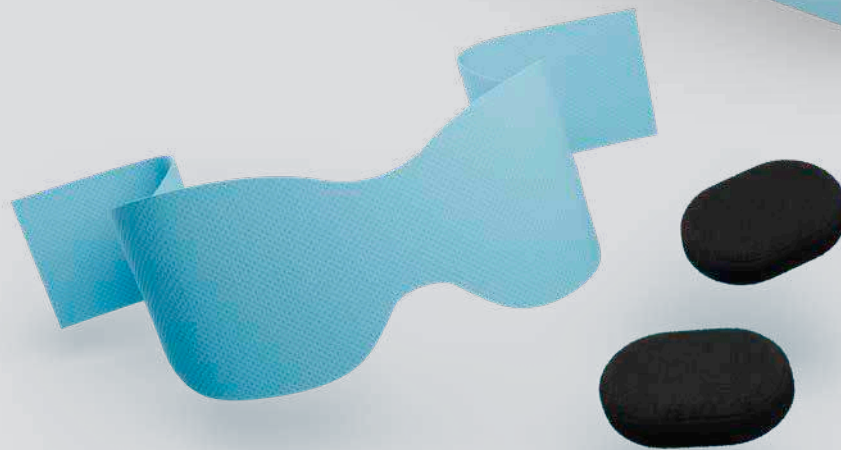
Should be positioned on the seat to maximize the contact surface with the patient and complete the monopolar circuit.

Code: **2503019CR**

## Hygiene and Safety Essentials

Disposable Tissues and Personalized Therapy Pads ensure hygiene and optimal performance during the therapy with the Rexion-Eye® Mask

Code: **4002039R**



**6**  
**Disposable Tissues**

These disposable waterproof tissues are essential for maintaining both hygiene and patient safety. They also ensure that the electrical current is distributed evenly across the entire eyelid surface during therapy.



**2**  
**Personalized Therapy Pads**

The Personalized Therapy Pads are made of high-quality conductive fabric, providing optimal signal delivery. Designed for single-patient use, these pads ensure maximum comfort and effectiveness throughout the entire therapy session.

# REXON-EYE PORTABLE SOLUTIONS



## Smart Folding Trolley

The Rexon-Eye® device can be complemented with a versatile trolley that easily transforms for convenient use and storage. It is designed for effortless transportation and can be easily folded

Code: **4002037R**



## Premium Hard-Shell Suitcase

A rugged, impact-resistant suitcase designed for superior protection. This hard-shell case resists impacts and ensures the Rexon-Eye® device remains safe during extended trips.

Code: **2301103**



# REXON-EYE DEVICE



Rexon-Eye® is the eye wellness solution trusted in over 60 countries worldwide.

Based on patented QMR® technology, it offers a unique, non-invasive approach to Dry Eye treatment.

Backed by science and embraced by professionals, it's redefining the standard of ocular surface care.

Code: **4001007**

## TECHNICAL DATA:

- Supply voltage and frequency: 100-230 V, 50 / 60 Hz, power consumption 300 VA
- Maximum output power: 20W / 200 Ω dual channel (mask electrode)
- Output frequency: patented spectrum 4-64 MHz
- Class IIa device (Directive 93/42/EEC)
- LCD Display
- Weight: 9kg
- Dimensions: 41x17x40 cm

1. Paolucci et al., Antioxidants, 2023

2. Dal Maschio et al., BAM, 2009

3. Sella et al., PloS ONE, 2018

4. Pedrotti et al., Br. J. Ophthalmol., 2017

5. Ferrari et al., Cornea, 2019

6. Trivli et al., J. Of Optometry, 2022

7. Kavroulaki et al., Cureus 2023

8. Ballesteros-Sánchez et al., Ophthalmol Ther, 2023

9. Shemer et al., Cornea, 2023

10. Foo VHX et al., Front Med, 2023

11 Prof. C. Reggiani, 2005



Patented in UE,  
USA and other  
countries.



# RESONO OPHTHALMIC

**Resono Ophthalmic S.r.l.**

Via Leonardo da Vinci, 13  
36066 Sandrigo (VI) - Italy



**+39 044 412 419 47**



**contact@resono.it**



**www.rexoneye.com**



Request our collection of QMR<sup>®</sup> documentation in ophthalmology  
and clinical outcomes with the Rexon-Eye<sup>®</sup> medical device.

Rev. 02/2025 Subject to technical changes as part of product development, as well as errors and omissions

