



Non-Mydriatic Auto Fundus Camera

AFC-330



THE ART OF EYE CARE

The Smart Fundus Camera

What is the smart fundus camera? It is a camera that is sophisticated, technologically advanced, and user-friendly.

The AFC-330 speaks for itself.

The AFC-330 has a built-in camera and computer, automated photography functions, multiple data management utilities, and easy-to-use operator assist functions. These smart features make fundus photography easier for screening and diagnosis.

All in One with Built-in Camera and Computer

The AFC-330 has an integrated CCD camera and microcomputer in one compact unit without requiring an external camera and PC. It eliminates complicated assembly and wiring during installation and is virtually "ready to use out of the box".

The built-in 12-megapixel CCD camera offers high quality fundus images and the microcomputer enables easy data management including auto print / export.

This compact camera enhances the portability, space-saving, and efficiency of the practice.



Tiltable 8.4-inch Color LCD Touch Screen



The 8.4-inch color LCD touch screen displays windows with intuitive menus and icons for ease of use.

An on-screen keyboard enables an operator to input patient data easily without disrupting the workflow in the clinic.

Five Automated Functions for Enhanced Ease-of-Use

The AFC-330 adds auto print / export to four automated functions from its predecessor, the AFC-230 / 210.

With five automated functions - 3-D auto tracking, auto focus, auto switching from anterior eye to fundus, auto shot, and auto print / export - the AFC-330 enables seamless photography from start to finish. The AFC-330 enhances ease-of-use and ensures high quality clinical photography.

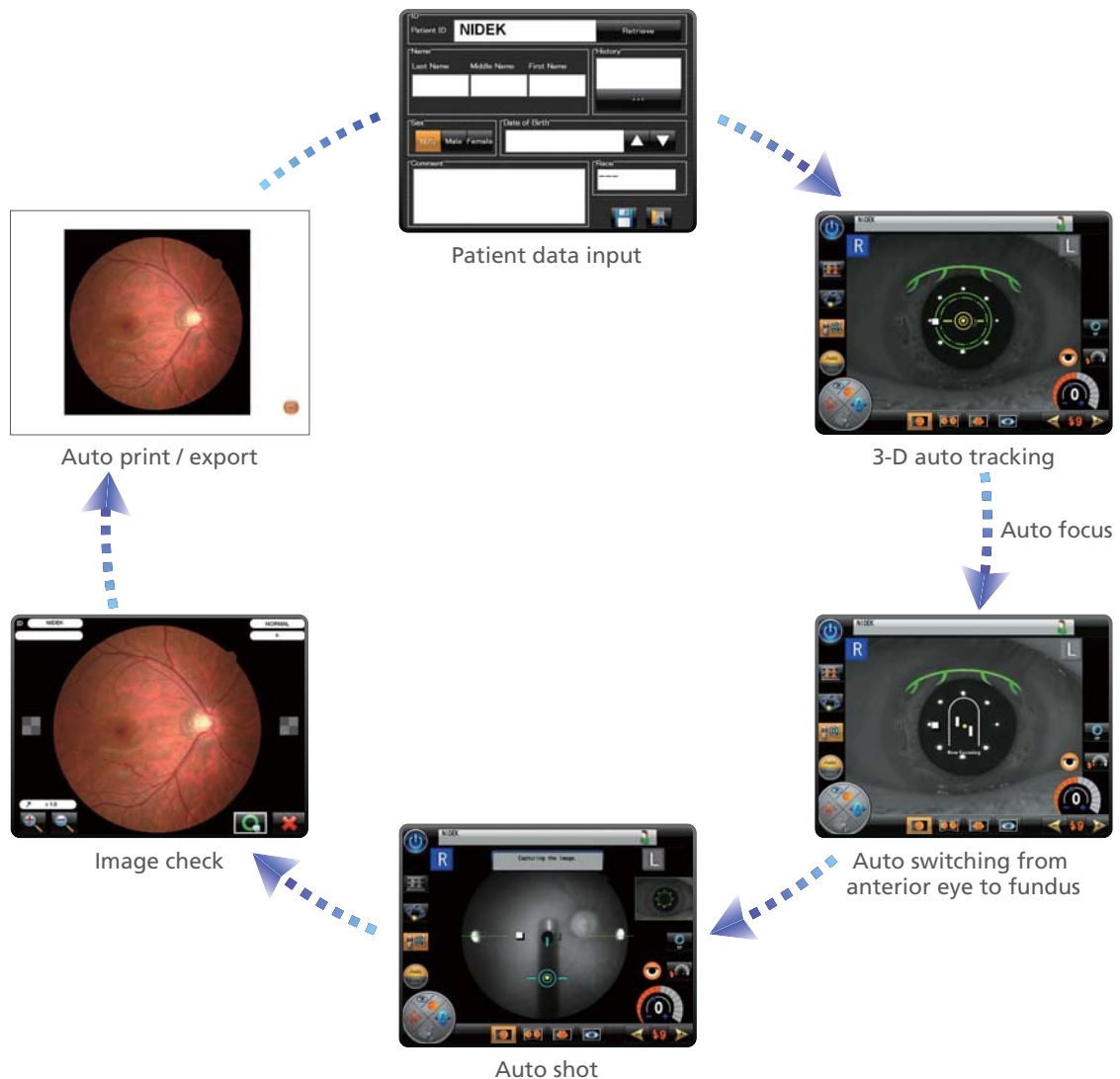
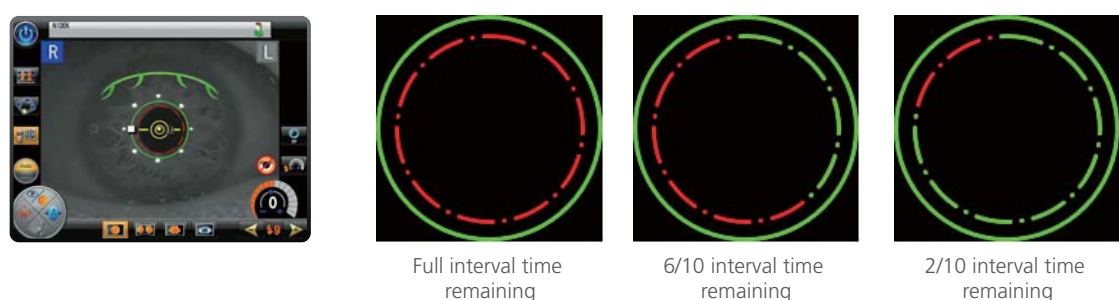


Image Capture Interval Indicator

The image capture interval indicator displays the lapsed time after a shot, which helps an operator wait for an eye to recover from pupil constriction. The interval time can be set from 1 to 10 minutes in 1 minute increments.

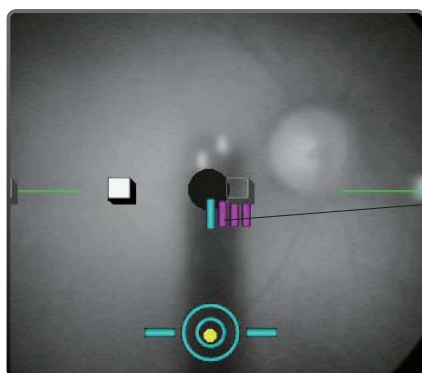


Monitor and Indicator for Operator Assist



Anterior eye monitor

The anterior eye monitor inset in the fundus observation screen allows an operator to constantly verify alignment.



Focus split indicator

The focus split indicator shows the amount of focus deviation in the fundus observation screen, which helps an operator to manually focus the AFC-330 on the fundus.

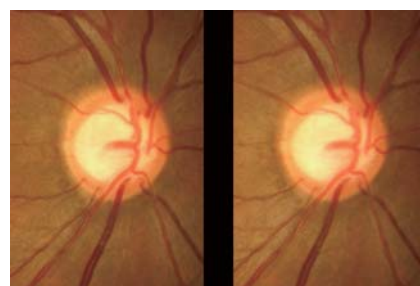
Navigation of Stereo and Panorama Photography

The AFC-330 navigates stereo and panorama photography with target marks displayed on observation screen, which enables an operator to easily capture stereo images and the image series for a panorama composition*.

* Stereo image observation and panorama composition are available with the NAVIS-EX software.



Navigation of stereo photography



Stereo images



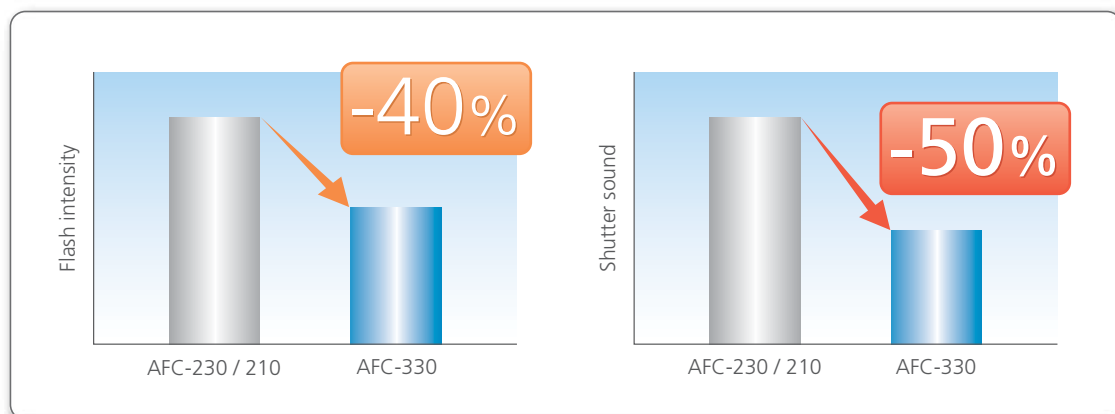
Navigation of panorama photography



Panorama

Low Flash Intensity and Quiet Shutter Sound

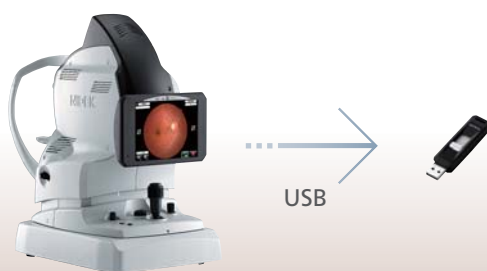
The AFC-330 reduces flash intensity by 40% and sound of the shutter by 50% compared to its predecessor, the AFC-230 / 210, which enhances patient cooperation and enables seamless fundus photography.



Data Management Utilities

Images that are captured and associated with patient data are saved, transferred, and managed with a USB memory or an external PC connected to the NAVIS-EX network. NAVIS-EX is an image filing software, which networks the AFC-330 and other NIDEK fundus imaging devices, the F-10 and RS-3000 series.

< Stand-Alone >



Input of patient information:

Touch screen keyboard

Data storage:

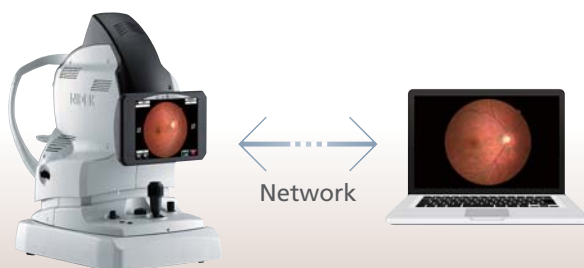
USB* memory

Image print:

External printer* with USB connection

*Driver software needs to be installed for use of the USB memory and external printer.

< Connection with External PC >



Input of patient information:

External PC with NAVIS-EX

Touch screen keyboard

Data storage:

External PC with NAVIS-EX

AFC-330 Specifications

| | |
|--|--|
| Type | Non-mydiatic fundus camera |
| Angle of view | 45° (33° in small pupil photography mode) |
| Working distance | 45.7 mm (from objective lens to cornea) |
| Minimum pupil diameter | ø4.0 mm (ø3.3 mm in small pupil photography mode) |
| Dioptric compensation for patient's eyes | -33 to +35 D total -33 to -7 D with minus compensation lens -12 to +15 D with no compensation lens +11 to +35 D with plus compensation lens |
| Focusing method | Infrared focus split alignment Adjustable range: -12 to +15 D |
| Light source | |
| For observation | Halogen lamp 12 V 50 W |
| For capturing | Xenon flash lamp 300 Ws |
| Flash intensity | 17 levels from F1 (F4.0 +0.8 EV) to F17 (F16 +0.8 EV) 0.5 EV increments |
| Internal fixation target | LED (maximum 9 points) |
| External fixation target | Free-arm (optional) |
| Horizontal movement | Forward / backward: 40 mm Right / left: 85 mm |
| Vertical movement | 32 mm |
| Vertical movement of the chinrest | 62 mm (motorized) |
| Auto tracking | X-Y-Z direction |
| Auto shot | Available |
| Camera | Built-in 12-megapixel CCD camera |
| Display | Tilttable 8.4-inch color LCD touch screen |
| Interface | LAN, USB 2.0 |
| Power supply | AC 100 to 240 V 50 / 60 Hz |
| Power consumption | 150 VA |
| Dimensions / Mass | 316 (W) x 518 (D) x 579 (H) mm / 29 kg 12.4 (W) x 20.4 (D) x 22.8 (H) " / 64 lbs. |

Product / Model name: NON-MYDRIATIC AUTO FUNDUS CAMERA AFC-330
 Brochure and listed features of the device are intended for non-US practitioners.
 Specifications may vary depending on circumstances in each country.
 Specifications and design are subject to change without notice.



| | | | | | | |
|--|---|--|--|---|--|--|
| HEAD OFFICE (International Div.) 34-14 Maehama, Hiroishi-cho, Gamagori, Aichi 443-0038, JAPAN TEL: +81-533-67-8895 URL: www.nidek.com [Manufacturer] | TOKYO OFFICE (International Div.) 3F Sumitomo Fudosan Hongo Bldg., 3-22-5 Hongo, Bunkyo-ku, Tokyo 113-0033, JAPAN TEL: +81-3-5844-2641 URL: www.nidek.com | NIDEK INC. 2040 Corporate Court, San Jose, CA 95131, U.S.A. TEL: +1-408-468-6400 +1-800-223-9044 (US Only) URL: usa.nidek.com | NIDEK S.A. Europarc, 13 rue Auguste Perret, 94042 Créteil, FRANCE TEL: +33-1-49 80 97 97 URL: www.nidek.fr | NIDEK TECHNOLOGIES S.R.L. Via dell'Artigianato, 6/A, 35020 Albignasego (Padova), ITALY TEL: +39 049 8629200/8626399 URL: www.nidektechnologies.it | NIDEK (SHANGHAI) CO., LTD. Rm3205, Shanghai Multi Media Park, No.1027 Chang Ning Rd, Chang Ning District, Shanghai, CHINA 200050 TEL: +86 021-5212-7942 URL: www.nidek-china.cn | NIDEK SINGAPORE PTE. LTD. 51 Changi Business Park Central 2, #06-14, The Signature 486066, SINGAPORE TEL: +65 6588 0389 URL: www.nidek.sg |
|--|---|--|--|---|--|--|